

North Lincolnshire Safeguarding Adults Board

Annual report 2023-24



Foreword

I am very pleased to introduce the North Lincolnshire Safeguarding Adults Board Annual Report for 2023-24. It has been another year of hard work, with strong collaboration and a clear commitment from all our partners to working together. I would particularly like to thank our Experts Together group, and all the people who have given up their time to share their experience and knowledge to help us shape our plans as well as challenging and supporting the day-to-day work of the Board and its sub-groups. I would also like to thank Board members, and the Executive for the commitment and hard work throughout the year as well as the services, staff and everyone who works to ensure residents of North Lincolnshire can be empowered and supported to stay safe and live well.

The three subgroups have continued to play an essential role in supporting the Board, with involvement from wider partners to support oversight of safeguarding activity, providing both mutual challenge and shared solutions. This report includes information on the work they have undertaken, including identifying themes and trends in safeguarding, informing areas for future development, innovation, and improvement.

This year we completed the review of our strategic plan and set out our new plan for the next three years. We increased our engagement with local community groups, with a new, fixed term post to support training and development. We continue to look for opportunities to share learning, locally, regionally and nationally and have strong links to other partnership boards in North Lincolnshire, through shared Executive Leads.

The joint safeguarding self-assessment process which offers assurance from partners on their approach and performance, with regard to safeguarding children and adults, has been undertaken with honesty and a willingness to identify areas for improvement. Regulator inspections indicate we have strong or improving services working in North Lincolnshire. As partners we will continue to learn and reflect on how we can work together to improve safeguarding practice within North Lincolnshire, raising awareness on how we all play a part in keeping people safe and making sure that the voices of people with lived experience are heard in everything we do.

Kamy Clark – Independent Chair

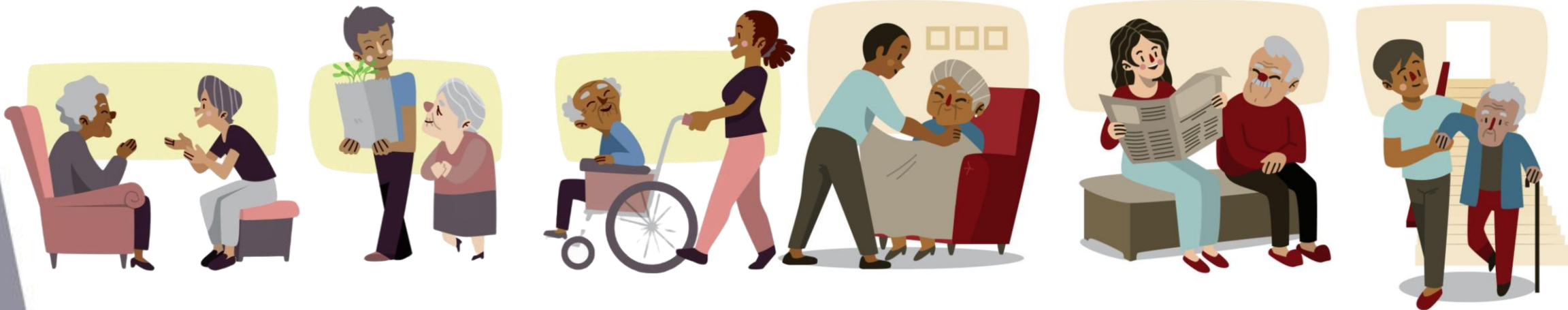


Introduction

This Annual Report details the work carried out by the North Lincolnshire Safeguarding Adults Board (NLSAB), to fulfil its statutory responsibilities for strategic development and oversight of adult safeguarding across the North Lincolnshire area. The report covers the one-year period (1 April 2023 – 31 March 2024) highlighting the board's progress and achievements.

The report includes how partners have contributed to the work of the board to promote effective adult safeguarding during the last year.

The report evidences that the NLSAB has made good progress in delivering the priorities and objectives laid out within our Strategic Plan and is testament to the strong partnership arrangements and commitment to ensuring that people's views are embedded in practice in North Lincolnshire.



Partnership key achievements

- Partners have made good progress delivering against the priorities and objectives identified within the strategic plan. Key developments include - engaging with adults with a lived experience to contribute towards policy, practice and awareness raising, enhancing understanding of safeguarding adults within the local community, voluntary sector and with partner agencies and ensuring that our partners are clear as to their roles, responsibilities and expectations
- There is a demonstrated clear commitment and contribution to safeguarding adults across the area, through representation and attendance by senior managers of all partner agencies at executive level and board meetings
- North Lincolnshire Council have developed and implemented a bespoke audit tool in relation to safeguarding concerns and enquiries. The tool provides an increased level of assurance in relation to safeguarding practice and evidences that the ethos of 'ask, listen and act' is central to the person's journey
- In partnership with the Named GP for Adult Safeguarding, the Integrated Care Board have delivered several 'lunch and learn' sessions for primary care practitioners on key safeguarding topics such as forensic examinations, domestic abuse and mental capacity



Partnership key achievements

- Rotherham, Doncaster and South Humber NHS Foundation Trust are strengthening their approach and contribution to the Multi-Agency Risk Assessment Conferences (MARAC) and are recruiting to a specialist domestic abuse MARAC Co-ordinator post
- Northern Lincolnshire and Goole Hospitals NHS Trust have introduced digitalised forms in relation to Deprivation of Liberty Safeguards (DoLS) and Mental Capacity, this has enabled timelier applications to be made and has improved the quality of assessments
- In the absence of a forensic service nationally and locally, North Lincolnshire Health and Care Partnership in collaboration with the NLSAB commenced a pilot, supported by NHS England and the Faculty of Forensic and Legal Medicine, to develop a Forensic Medical Examination service. The pilot is supported by a process which is undertaken when adults at risk have sustained a possible non-accidental injury because of suspected abuse or neglect. The implementation of the pilot has provided consistent, and clear guidance, and practitioners have reported they feel more confident in their safeguarding practice
- An Independent Domestic Violence Advocate (IDVA) is co-located within the council's safeguarding adults team providing specialist advice and guidance



Partnership key achievements

- North Lincolnshire Council have implemented an online safeguarding concern form which allows referrers to raise concerns quickly and efficiently. Since the introduction of the form there has been a noted improvement in the quality of concerns submitted
- Humberside Fire and Rescue Service have held several interactive community safety sessions at local fire stations. Participants were able to engage with experts, ask questions and gain valuable insights into latest safety initiatives
- Humberside Police have developed and delivered a number of media campaigns in partnership with the community to raise awareness of key safeguarding topics such as fraud, hate crime and modern slavery
- East Midlands Ambulance Service have developed and delivered bespoke training for ambulance crews in relation to alcohol and substance misuse, strengthening understanding in relation to mental capacity
- North Lincolnshire Council's Safeguarding Adults Team have introduced weekly operational meetings with North Lincolnshire Health and Care Partnership, health providers and police colleagues to support decision making and oversight of safeguarding enquiries. The meetings have strengthened relationships and encouraged the effective contribution of specialist knowledge and skills of partner agencies



About the North Lincolnshire Safeguarding Adults Board

The NLSAB brings together partner agencies to work together to on priorities to respond to and reduce the risks for adults with care and support needs in respect of abuse and neglect.

The board is a statutory partnership with specific duties and functions as set out within the Care Act 2014. The board is funded by the core statutory partners - North Lincolnshire Council, North Lincolnshire Health and Care Partnership and Humberside Police. This funding enables the board to commission an Independent Chair and a board Business Unit to help carry out its duties and functions.

The duties of the board as set out within the Care Act 2014 include:

- The publication of a strategic plan, outlining how the board will meet its objectives and how partner agencies will support the delivery of the plan
- The publication of an annual report, providing details of the work of the partnership to implement the strategy and achieve its objectives during the previous year
- The commissioning of Safeguarding Adult Reviews (SARs) under section 44 of the Care Act 2014

The overarching purpose of the board is to ensure effective co-ordination of response and services to safeguard and promote the welfare of local adults who may be at risk of abuse and harm.

It does this by:

- Assuring itself that local safeguarding arrangements are in place as defined within the Care Act 2014
- Assuring itself that practice is person-centred, and outcome focussed
- Working collaboratively to prevent abuse and neglect where possible
- Ensuring that agencies and practitioners give timely and proportionate responses when abuse or neglect have occurred
- Assuring itself that safeguarding practice is continuously improving and enhancing the quality of life of adults in its area

Membership

The NLSAB is made up of senior officers nominated by each member agency. Members have sufficient delegated authority to effectively represent their agency and make decisions on their agency's behalf, and, if they are unable to attend board meetings for any reason, they send a nominated representative of sufficient seniority.



Strategic plan 2023-25

In 2023, the NLSAB launched its new Strategic Plan. The plan covers a 3-year period as recommended within the Care Act Statutory Guidance 2015.

Partners wanted the plan to be clear about intentions and priorities, so that the partnership had the best chance to work well together.

In developing the strategic plan, the NLSAB have:

- Worked with people with a lived experience, with carers and with the workforce to hear what is important to them, including holding a development event, co-designed with people with lived experience, and the dissemination of surveys
- Reviewed how the board were able to meet the commitments made in the previous three-year strategic plan, looking at what had worked well and what could be better
- Considered the available data and information about performance and outcomes in North Lincolnshire
- Reviewed local and national learning about best practice and areas for improvement

North Lincolnshire
Safeguarding Adults Board

Strategic Plan

2023 - 2025



Strategic plan 2023-25

The Strategic Plan is intended to ensure the safeguarding principles and making safeguarding personal outcomes can be delivered in North Lincolnshire. The objectives are aligned to the six safeguarding principles.

Six strategic priorities have been identified, which are underpinned by thirteen strategic objectives. Business plans have been developed which describe the activities and outcomes the NLSAB will achieve to deliver its objectives.

The business plans are designed to enable implementation and monitoring of actions in a clear and concise way, including clear timescales, measures of success and progress. The business plans are monitored, and progress is reviewed by both the Executive Group and Board on a regular basis.

Listening to the voice of people with a lived experience continues to remain at the heart of the plan - embracing the ethos of 'Experts Together'

Empowerment

Our plans will focus on –

Working directly with adults with care and support needs to enhance our communications, policies and procedures so that people are empowered to make their own decisions to live free from harm and abuse.

Strengthening the voice of carers, recognising the importance of their own personal wellbeing and resilience alongside those of the person they care for.

Partnership

Our plans will focus on –

Engaging with local community groups and voluntary sector to raise awareness and understanding of safeguarding adults, with a focus on diverse, isolated and under-represented communities.

Working with other partnership boards in North Lincolnshire and in the region to ensure a collaborative approach is taken to safeguarding.

Prevention

Our plans will focus on -

Continuing to raise awareness of safeguarding adults in a variety of formats to help people understand what abuse is, recognise the signs and know how to seek help.

Continuing to promote a positive learning and improvement culture where we continually reflect on our practice and learn from local, regional and national reviews and identify ways to prevent and reduce harm.

Proportionality

Our plans will focus on -

Delivering multi-agency and bespoke training and education where awareness and understanding needs to be enhanced.

Ensuring people are signposted to independent support, advice and advocacy to reduce risk and build future resilience.

Protection

Our plans will focus on -

Ensuring our policy, procedures and guidance are effective, flexible and adapt in response to learning.

Strengthening practice particularly around professional curiosity, carer awareness, legal literacy and trauma informed responses.

Using all available data and intelligence to help recognise emerging safeguarding themes and trends, including considering hidden harm and ensure action is taken when needed.

Accountability

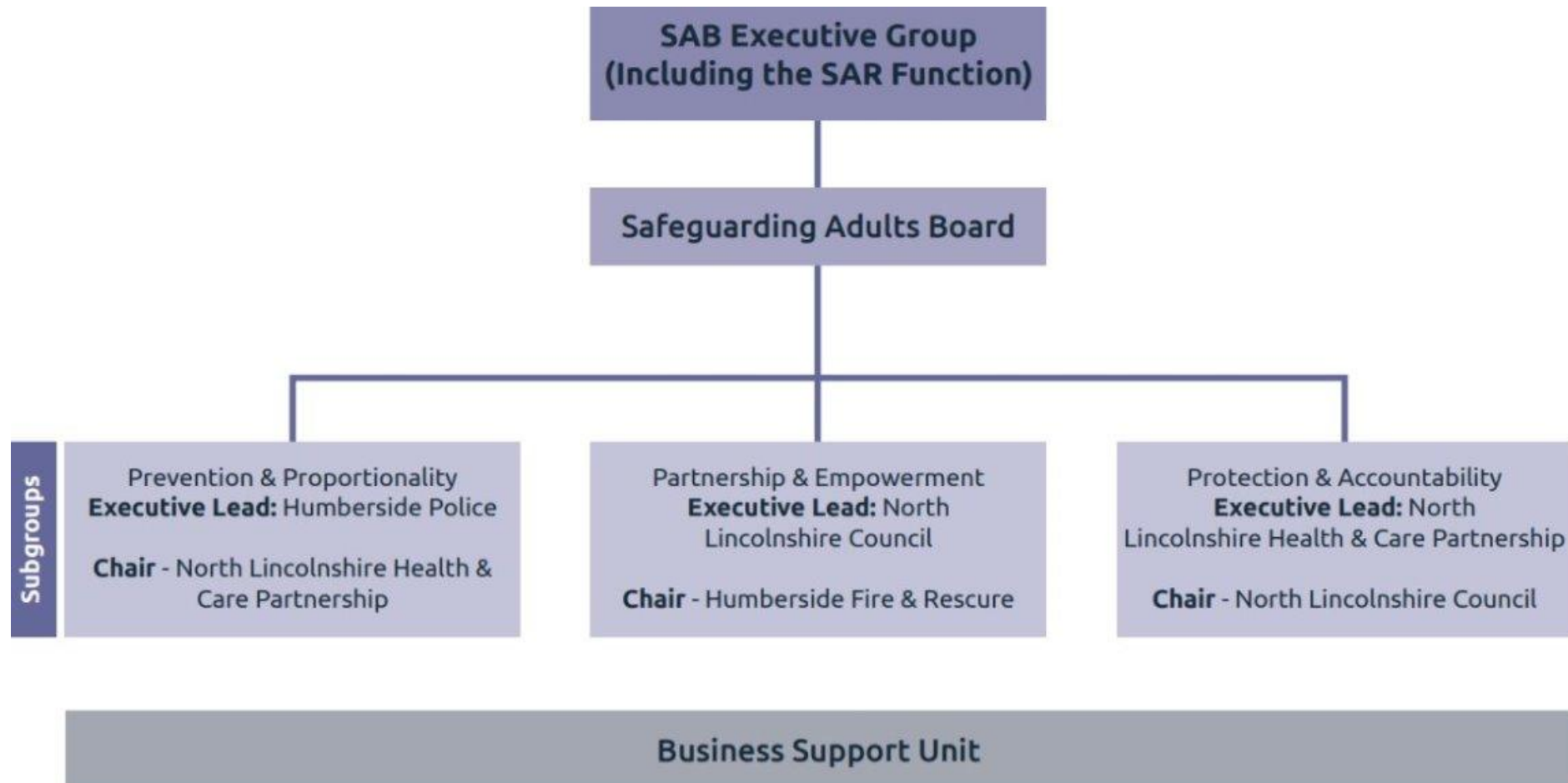
Our plans will focus on -

Holding partners to account and ensuring effective system oversight of safeguarding adult arrangements, functions and performance.

Ensuring there are effective mechanisms in place to ensure information sharing is not a barrier.

Delivery framework

NLSAB activity is delivered through a SAB Executive Group meeting, a Safeguarding Adults Board meeting and a series of underpinning subgroups. Much of the activity of NLSAB is delivered by the subgroups that carry out work according to the strategic plan, these groups have an executive lead member to provide oversight and leadership to the groups. Progress is reported to and overseen by the Executive Group, through highlight reports which are authored by the relevant subgroup Chair.



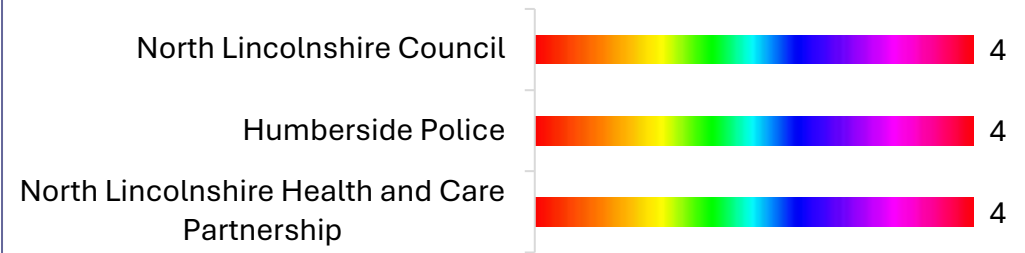
Board attendance

Throughout 2023-24, the Executive group and the full Board met quarterly. In the intervening periods the subgroups (Protection & Accountability, Prevention & Proportionality, and the Partnership & Empowerment) regularly met and carried out safeguarding activity as outlined within the strategic plan, reporting progress and outcomes directly to both the Executive group and the Board.

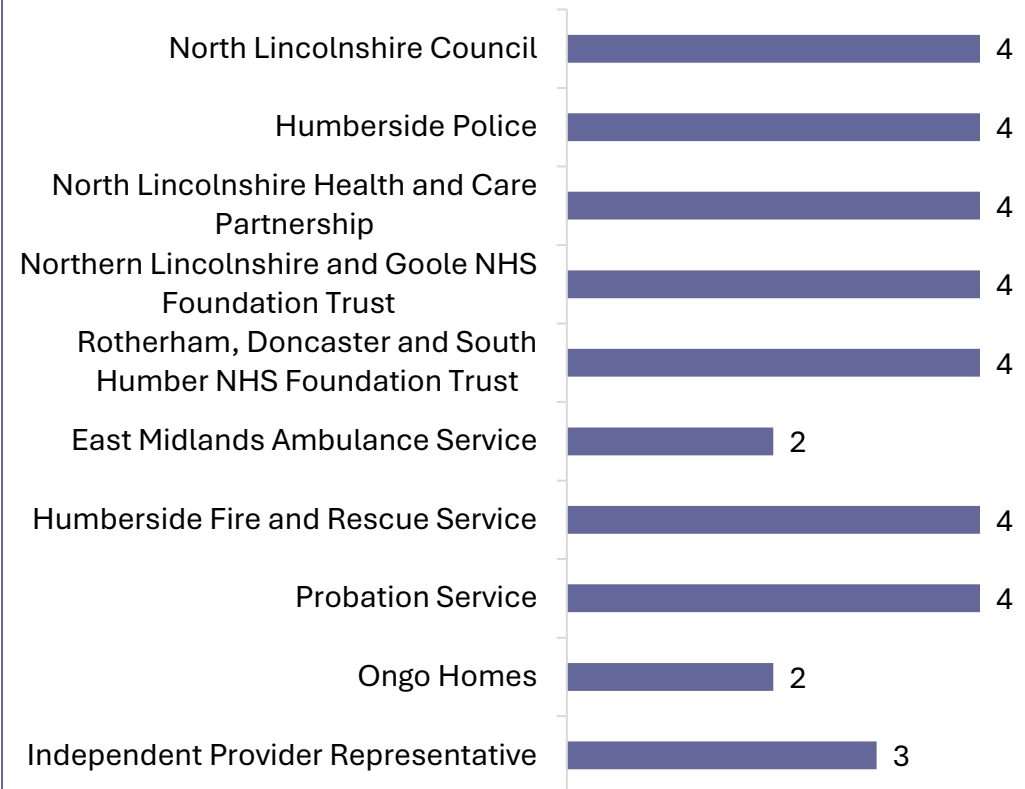
The NLSAB continues to demonstrate a sustained level of attendance and participation from members. There is a clear commitment to safeguarding adults across the area, through representation by senior managers of all partner agencies that have an investment in good safeguarding practice.

Mechanisms are in place to ensure partners unable to attend meetings due to operational and logistical reasons can - and do contribute to delivering the board's objectives. Partnership contributions to the work of the board are also monitored via the agency self-assessments and one-to-one meetings with the Independent Chair.

SAB Executive Group Attendance



SAB Attendance



Care Quality Commission (CQC) Local Authority Assessment

Inspected and rated

Good



The Care Quality Commission (CQC) have started assessments of how local authorities are meeting their Care Act responsibilities in order to provide independent assurance to the public. Pilots were undertaken in 2023, and baselining assessments began in early 2024.

In August 2023 North Lincolnshire Council were one of five local authorities to take part in the pilot assessments.

The assessment focussed on four themes:

- Working with people
- Providing support
- Ensuring safety
- Leadership

The assessment shone a light on safeguarding, particularly looking at how the council works with people to understand what being safe means to them and how they work with partners to achieve that. Exploring what is done to improve people's lives whilst protecting their right to live in safety, free from bullying, harassment, abuse, discrimination, avoidable harm and neglect.

The council were assessed as having a 'good' standard of care and support overall and a 'good' level of assurance for safeguarding.

Feedback from the assessment team included:

- **Robust partnership** and **integrated working** across the safeguarding system
- **Positive partnership relationships** which were **respectful, strong and open to challenge**
- **Strong partnerships with people who have a lived experience**, the Experts Together Partnership were positive about their involvement in **co production** with the Safeguarding Adults Board
- **Safeguarding enquiries** were dealt with in a **timely way** – there was a strong focus on ensuring a personalised approach with the wishes of the person at the heart
- Recognition of the success of the **Forensic Examination Pilot**
- **Awareness raising**, training and development work is undertaken with providers, voluntary sector partners and communities to **enhance understanding** of safeguarding and good data
- There was a **proactive approach to learning** from serious abuse or neglect, including oversight of national and regional learning to look at whether it could be used to improve safeguarding locally
- **Partnership working** was **well established** with strong relationships at all levels

Subgroup updates

The following slides provide an overview of the actions completed by the subgroups to meet the objectives of the Safeguarding Adults Board



Partnership and Empowerment Group



The Partnership and Empowerment subgroup consists of adults with a lived experience, partners from Humberside Police, Humberside Fire and Rescue, Healthwatch, North Lincolnshire Health and Care Partnership, North Lincolnshire Council, Ongo, and advocacy services. The group is chaired by the Prevention Manager within Humberside Fire and Rescue Services. Engagement, commitment and contribution within the partnership remains strong.

The group understand the value of working together with partner agencies and other professionals to get the best result for adults with care and support needs who are at risk of abuse and neglect. The group also recognise the importance of ensuring that the voice of adults who have a lived experience is heard, listened to, and that this directly informs the work of the partnership.

The group meet quarterly, its aims are:

- To continue to promote awareness and understanding of safeguarding adults within the local community, voluntary sector and with partner agencies
- To make sure that safeguarding information is available to adults in an easily accessible format, jargon free and easy to understand
- To support adults and their families / carers to be empowered and feel involved in their safeguarding journey, making sure their views and wishes directly inform what happens
- To co-produce key strategies, information and leaflets with adults who have a lived experience, carers and other partner agencies

Partnership and Empowerment Group

Publications and awareness raising

The group has continued to work with adults who have a lived experience, and their families to help them recognise the signs of abuse, know how to report concerns and seek help to keep themselves and others safe. The group have refreshed the information in relation to the categories of abuse on the NLSAB website, ensuring that each section is explained in a way which is clear, concise and easy to understand.

The group have worked with the Experts Together Partnership to review and update various sections on the NLSAB website. An accessibility tool has now been added which allows the user to automatically increase font sizes, change text and background colours and contrast, and also provides readable fonts.

In addition, a number of key areas have been added and enhanced such as:

- Information, guidance and tools in relation to Autism
- Guidance and tools for care providers in relation to key themes such as falls
- Information and advice in relation to suicide
- Shared learning from reviews, case audits and line of sight to practice events

The group will continue ensure relevant information is shared, and the NLSAB website is regularly updated and continues to be a valuable source of information and guidance for partner agencies and people within the community.

Following feedback from adults who have a lived experience of safeguarding, the subgroup are updating and enhancing leaflets available to people with care and support needs – particularly in relation to a person's safeguarding enquiry journey and what can be expected. This enables people with care and support needs to better understand what is involved in an enquiry and how they can contribute to their own safeguarding plan.

Partnership and Empowerment Group

Feedback from people with lived experience

In partnership with people who have experience of safeguarding and Healthwatch North Lincolnshire, the 'my safeguarding journey' feedback forms were developed and implemented. The forms are available in a variety of different formats, such as electronically on the SAB website, paper form or the link can be text or emailed to mobile devices.

In 2023-24, feedback was received from 62 people, families and advocates in relation to their safeguarding journey.

37 feedback forms were completed by adults with a lived experience. All responses said that they were asked at multiple points around what they wanted to happen to make them feel safe. All responses said that they were listened to and included in their plans, and 89% of people said that they were happy with the outcome of the enquiry and that following support they felt safer.

20 responses were submitted by a family member, friend or carer. The majority indicated that they felt listened to, that they were included in the safeguarding plan and that following support the adult was made safer.

5 responses were received from independent advocates. All responses indicated that they were involved in decision making and 4 out of 5 people said that the right amount of support was provided and that the adult was safer as a result of the support provided.

Feedback was also given in relation to the questionnaires and as a result they have been further enhanced.

The feedback is fed into the Partnership and Empowerment Group so that it helps shape and develop safeguarding practice.



The majority of feedback was positive in relation to people's safeguarding experiences and evidenced that people felt listened to and involved.

Prevention and Proportionality Group



The subgroup understands it is important that a proportionate response is given to any safeguarding situation, and that partner agencies work in the best interests of adults who have care and support needs within North Lincolnshire.

The subgroup consists of representatives from North Lincolnshire Council, ONGO, Advocacy Services, Humberside Police, independent provider sector, Northern Lincolnshire & Goole Hospitals NHS Trust, North Lincolnshire Rotherham Doncaster and South Humber NHS Foundation Trust, North Lincolnshire Council and is chaired by the Designated Safeguarding Nurse, North Lincolnshire Health and Care Partnership.

The partnership is one that always strives to learn and improve. The subgroup supports this ethos in a variety of ways from delivering training, developing a range of briefing documents, through to sharing learning from statutory reviews such as Safeguarding Adult Reviews (SARs), Domestic Homicide Reviews (DHRs) and Child Safeguarding Practice Reviews (CSPRs).

The group meet quarterly, its aims are:

- To continue to raise awareness of safeguarding adults in a variety of forums to help people understand what abuse is, recognise the signs and know how to seek help
- Continue to promote a positive learning culture where we continually reflect on our practice and learn from local, regional and national reviews and identify ways to prevent and reduce harm
- Deliver multi-agency training and education where awareness and understanding needs to be enhanced
- Ensure people are signposted to independent support, advice and advocacy to reduce risk and build future resilience

Prevention and Proportionality Group

Enhanced threshold document

In 2023, the SAB threshold document was expanded and enhanced following research from other SABs and feedback from providers and partners.

The threshold document is designed to support decision making around the kinds of incidents that may be addressed through alternative processes (lower-level concerns where no harm has occurred) and helps ensure a consistent approach is taken to reporting of safeguarding concerns across the partnership.

The threshold document covers all categories of abuse as defined within the Care and Support Statutory Guidance 2015 and now includes guidance on additional themes such as pressure ulcers, falls, and maladministration of medication.

Short briefing sessions have been delivered to provide an update on the changes and to support application of the tool. Over 250 practitioners have attended the sessions since their launch.

Feedback following the sessions indicate that practitioners felt the training was positive, with the majority of attendees feeling much more confident in their knowledge and understanding of thresholds and how to utilise the document in their practice.

As a result, there has been an improvement in the quality of safeguarding concerns raised which ensures a timelier response.



'the threshold is concise, easy to read, and I can quickly reference and understand it'

'short succinct training worked so well'



Prevention and Proportionality Group

Homelessness and rough sleeping

The subgroup recognise the considerable overlap between rough sleeping and the presence of safeguarding concerns. Many adults sleeping rough are at risk of abuse, neglect and escalation of health and care needs. It is important that partnership arrangements incorporate clear and sufficient mechanisms that support and encourage collaboration to support people who are rough sleeping.

The subgroup have undertaken significant work to enhance and strengthen the partnership and support offered to people who rough sleep, including:

- Providing bespoke training to staff and people who utilise the services of local charities who support people who are, or at risk of homelessness
- Sharing tools and resources to improve the health of people affected by homelessness, through a better understanding of their experiences
- Ensuring that relevant case law and changes to legislation are shared with practitioners to consider and embed into practice
- Sharing and disseminating learning from local, regional and national learning reviews
- Collaboration with the Changing Lives Changing Futures Partnership which promotes recovery, rehabilitation and wellbeing



Prevention and Proportionality Group

Training and education

The subgroup seeks to support partner agencies in keeping up to date with their safeguarding knowledge and skills, a wide range of training and education sessions have been co-ordinated and delivered to over 450 professionals and practitioners. Training has included:

- Fraud and cyber-crime (in partnership with Community Vision, Humberside Police and Age UK)
- Motivational interviewing
- Legal literacy and adult safeguarding in practice, delivered by EDGE
- A partnership approach to self-neglect (in partnership with the Safeguarding Adults Team, Humberside Fire and Rescue and health partners)
- Adult safeguarding and homelessness
- Barriers to seeking safeguarding support (in partnership with local community and voluntary groups)

Feedback from the training shows that all training delivered and coordinated by the NLSAB was rated as either good, or excellent.

The majority of attendees felt what they had learnt would make a positive difference to their future safeguarding practice.

- The board has been assured by its partners that their workforce in North Lincolnshire have sufficient training at the right level to discharge its safeguarding responsibilities. The following training courses were available to the workforce through partner agencies during the year:
 - Safeguarding Adults Tier 1 (eLearning) – providing an overview of what is meant by abuse and neglect, the duty to safeguard adults with care and support needs, ensuring immediate safety, and how to report concerns
 - Safeguarding Children Tier 1 (eLearning) – providing an overview of what is meant by safeguarding children, the duty to protect children and how to report concerns
 - Safeguarding Adults Tier 2 – aimed at frontline practitioners. Providing an overview of safeguarding concerns and enquiries, making safeguarding personal, decision making in relation to safeguarding concerns and ensuring that staff can apply their own organisational procedures and processes for reporting and documenting safeguarding adult concerns
 - Safeguarding Adults Tier 3 – aimed at frontline practitioners and managers. Staff are trained in how to undertake effective safeguarding enquiries, ensuring that enquiries are person centred, and outcome focussed, in line with the Care Act 2014 and best practice
 - Mental Capacity Act & DOLs in Practice - Levels 1 and 2 – staff are trained in the application of the Mental Capacity 2005 and have an understanding of the Deprivation of Liberty Safeguards

'this training gave me brilliant insight and definitely opened my eyes!'

'I have learnt so much that I will take back and share with my colleagues'

Prevention and Proportionality Group

Learning from practice

The group regularly review key messages from published regional and national reviews and investigations such as - Safeguarding Adult Reviews (SARs), Child Safeguarding Practice Reviews (CSPRs) and Domestic Homicide Reviews (DHRs) ensuring that any learning relevant to North Lincolnshire is appropriately shared and implemented.

Regular 'learning from safeguarding adults reviews (SARs) briefing' have been developed by the subgroup. Each briefing is based on a published, regional or national SAR. Partners are encouraged to use these briefings to stimulate thinking and reflect on how the learning could be relevant within their organisations.

Briefings developed and disseminated include:

- Liam (fire safety)
- James (suicide and substance misuse)
- Mrs Willis (organisational abuse and neglect)
- Mr G (homelessness)

The group have created several seven-minute briefings. These briefings are based on research, which suggests that seven minutes is an ideal time span to concentrate and learn. The briefings have been designed as learning aids which can be used within team meetings, supervision or as simple reminders of the key issues around key safeguarding themes and current issues including:

- Tackling domestic abuse
- Forensic examinations
- Learning Disability and Mortality Reviews (LeDeR)
- Multi-agency Public Protection Meetings (MAPPA)
- Information sharing
- Adult criminal exploitation
- Adult sexual exploitation
- Professional curiosity

Prevention and Proportionality Group



North Lincolnshire
Domestic Abuse Partnership Board



North Lincolnshire
**COMMUNITY
SAFETY
PARTNERSHIP**



Youth Justice Partnership
North Lincolnshire

Joint-Board working

Having robust safeguarding arrangements requires collaboration between partners (including other partnership boards). It is important that effective links are made with partnerships to maximise impact and minimise duplication, enabling us to strengthen our local safeguarding approach together.

There are close links and synergies across all the NLSAB subgroups, and other partnership boards including:

- Children's Multi-Agency Resilience and Safeguarding (MARS) Board
- Community Safety Partnership (CSP)
- Domestic Abuse Partnership Board (DAPB)
- Youth Justice Partnership (YJP)

Below are some examples of the collaborative work which takes place:

- Bi-monthly meetings with Board Managers, ensuring that each board remains sighted on each other's priority workstreams and continued collaboration
- The SAB and Children's MARS Board have a joint approach to the partnership safeguarding self-assessment which aims to seek assurance around how partners work to safeguard both children and adults in individual agencies. It also fulfils Section 11 of the Children's Act and provides the opportunity to seek joint assurance across agencies who do not primarily work with adults but may come into contact with them
- Joint communications are sent, raising awareness of cross-cutting themes such as domestic abuse, mental health, transitions and community safety
- Joint training and education has been delivered, such as MARAC training, managing allegations (PiPoT and LADO) and self-neglect
- The use of data has been reviewed and reports between boards are being shared where appropriate. This not only avoids duplication but helps us to develop a joint understanding of our local communities
- A partnership approach is taken to the development of strategies such as the SAB Strategic plan and Domestic Abuse Strategy ensuring holistic approach is taken
- Joint work is undertaken in relation to commissioning decisions which have cross-cutting themes such as advocacy, translation services, domestic abuse and perpetrator programmes

Prevention and Proportionality Group

Stakeholder and community engagement

In addition to the wide range of training and education offered to partners, the information and guidance published on the NLSAB website is regularly reviewed and refreshed and includes a range of tools to support practitioners.

Monthly communications are shared and disseminated to a large safeguarding network which provides information and tools in respect to national policy, legislation update, international / national key themes, campaigns, resources available to practitioners, training and services available.

National and regional training opportunities which have been promoted within the communications include:

- Labour exploitation within the care sector
- Learning from SARs: discrimination and discriminatory abuse
- Adult Social Care and gambling harms
- Series of webinars on homelessness by King's College London
- Modern slavery and human trafficking in the UK: Know it, see it, and respond

The subgroup has been actively working to engage with local community groups and voluntary sector to raise awareness and understanding of safeguarding adults and deliver joint training and education, with a focus on diverse, isolated and under-represented communities.

The group work closely with the Humberside Police Community Cohesion Officer who has well-established relationships with a wide range of communities across North Lincolnshire. The group has been able to link in with various community groups and partnerships including the Humberside Violence Against Women and Girls Independent Advisory Group (VAWG IAG), the Modern Slavery Partnership, the Sikh Temple and Scunthorpe Central Mosque.

We are utilising the knowledge and expertise of our community hubs and have also worked with the 'Crosby Collective' - a non-profit organisation which aims to develop our local communities and offers a platform for collaboration.

The group have also established links with Community Vision who work closely with a wide range of Voluntary, Community and Social Enterprise (VCSE) sector organisations. Safeguarding representatives present at the annual safeguarding conference.

This work contributes to our understanding that people are experts in their own lives which enhances local safeguarding practice.

Protection and Accountability Group

The board is committed to ensuring that safeguarding arrangements, and partner agencies of the board act to help and protect adults who may be at risk in North Lincolnshire.

The Protection & Accountability subgroup consists of representatives from Humberside Police, North Lincolnshire Health and Care Partnership, Northern Lincolnshire & Goole NHS Trust, Humberside Fire & Rescue, independent provider sector, Rotherham, Doncaster and South Humber NHS Foundation Trust, Healthwatch, ONGO and is chaired by the Assistant Director, Safeguarding and Assurance for North Lincolnshire Council.

The group meet quarterly, its aims are:

- To ensure policies, procedures and guidance are effective, flexible and adapt in response to learning
- Strengthening practice particularly around professional curiosity, carer awareness, legal literacy and trauma informed responses
- Utilising all available data and intelligence to help recognise emerging safeguarding themes and trends and ensure action is taken when needed
- Holding partners to account and ensure effective oversight of the adult safeguarding system
- Ensuring there are mechanisms in place so that information sharing is not a barrier



Protection and Accountability Group

Scrutiny and assurance

The NLSAB has an established multi-agency scrutiny and assurance framework in place which is overseen by the subgroup. The framework provides assurance to partners in relation to safeguarding practice and ensure that policies and procedures are effective. Within the framework there are a number of mechanisms which provide opportunities to work in partnership to learn and to improve practice across the multi-agency safeguarding system.

The Scrutiny & Assurance Framework enables partners to:

- Talk with, and receive direct feedback from adults at risk, adults with lived experience and their families
- Have assurance of whether partner agencies are fulfilling their responsibilities to safeguarding adults who are at risk of abuse or neglect
- Have assurance of whether partner agencies are joined up and working together to safeguard and promote the wellbeing of adults at risk across the safeguarding system
- Have a direct line of sight to frontline practice
- Have live conversations with frontline practitioners

Our full scrutiny and assurance framework is available on the [Safeguarding Adults Board website](#).

In September 2023 and February 2024, two Line of Sight to Practice events took place in relation to local cases. As part of the event, key partners were requested to complete and submit a chronology in relation to the case for consideration by the panel. The panel is made up of key leads from the relevant SAB subgroup who come together to agree key lines of enquiry prior to a discussion with multi-agency practitioners. The focus of the learning event is to reflect on the adult's journey and to identify any opportunities for improved collaboration between agencies and to share good practice.

Both cases reviewed featured an adult who sadly died and had been supported previously by services but were not being supported at the time of their deaths. It was agreed that although neither case met the criteria for a Safeguarding Adults Review, a Line of Sight to Practice event would be held to 'deep dive' into the case circumstances and determine whether any learning could be identified.

An overview of both events were presented to the Protection and Accountability subgroup and 7-minute briefings were developed to disseminate the key themes and learning. For the purposes of publications, Pseudonyms have been used for the above persons – Fletcher and Matilda.

Protection and Accountability Group

Fletcher & Matilda

Key themes, strengths and good practice were identified as below:

- The adult's views and wishes were listened to and directly informed the support provided
- There were positive examples of multi-agency responses to potential risk and harm
- The principles of Making Safeguarding Personal and person-centred practice were clearly evident
- Strengths-based approaches were taken, and reasonable adjustments were made by practitioners which led to positive outcomes for the adult
- The importance of professional curiosity and relational practice was evident
- The views of wider family members and friends were listened to and considered
- The interconnectivity between self-neglect and executive functioning was challenge for practitioners on occasions
- Understanding of complex needs and how one issue can impact on another was integral to supporting the person



Protection and Accountability Group

The NLSAB and its subgroups have strong links with other key partnerships where appropriate and a joint board approach is taken to areas of shared focus.

In December 2023 and February 2024, two joint Children's MARS Board and NLSAB thematic assurance events took place on the theme of domestic abuse and the impact on children, and child exploitation with a specific focus on transitions to adulthood. 7-minute briefings have been developed and disseminated across the partnership to share the learning from the events.

Thematic Assurance Event - Transitions to adulthood

This thematic event, led by an Independent Scrutiny Officer, comprised of:

- Observation of the Multi-Agency Child Exploitation (MACE) meeting including triage of new referrals
- A bespoke meeting with multi-agency managers and practitioners to discuss their roles, remit and responsibilities
- A meeting with multi-agency practitioners who presented their work through case discussions relating to 3 young people who had transitioned to adulthood within the past 3 years
- 14 cases in total were considered in detail across all meetings

There is evidence of strengths and good practice as follows:

- There is a good sense of leadership, learning culture and evidence of strong local partnerships
- There is a 'build the team around the relationship' mindset, that is strengths based, and relationship driven
- Practice is young person centered with the appropriate use of professional language therefore avoiding any shaming or blaming language
- The meetings considered individual needs as well as location mapping and hotspots, focusing on locations, places and spaces where actual or suspected exploitation, took place Good knowledge of local hotspots and robust targeted interventions was evident
- The case studies evidenced strong multi agency working and tenacity in developing relational approaches. The young people continued to be discussed in MACE beyond the age of 18 to ensure the targeted support achieved the desired outcomes of making the young person safer
- There was proactive planning for transition through adult services and purposeful working between children's social care, adult social care and the Youth Justice Partnership

Protection and Accountability Group

Line of Sight Event – Domestic abuse and the impact on children

After a process of single agency case audits, a panel, consisting of representatives from the Children’s MARS Board, Safeguarding Adults Board and Domestic Abuse Partnership Board and an Independent Scrutiny Officer, met with practitioners to discuss a small number of cases. The panel identified areas of best practice, learning and further improvement relating to multi agency practice then agree any actions.

There is evidence of strengths and good practice as follows:

- Both cases demonstrated trauma informed, relational and person centred-practice
- The outcomes for both children were positive as a result of interventions
- The needs of the whole family were considered whilst ensuring that each child in the household was seen as an individual
- Children were supported to remain in their family, school and communities
- In one case, adult focused services considered the needs of the children when planning for mother
- Children and families were involved in their own plans and their views and voice was evident in the records
- Information sharing between partners was strong, robust and timely
- There was positive working between the police and Independent Sexual Violence Advisor (ISVA)
- Interventions were timely and proportionate to situation
- Management oversight and regular supervision was evident
- The Re:Form domestic abuse perpetrator programme was utilised positively in one case and led to improved outcomes for the whole family

The 7-minute briefings from all our scrutiny and assurance events are available on the Learning from Practice page of the Safeguarding Adults Board website.

Protection and Accountability Group

Policies and procedures

The NLSAB has an important statutory function in overseeing and leading on adult safeguarding arrangements across North Lincolnshire. To do this effectively there needs to be robust governance arrangements and effective multi-agency policies and procedures.

The subgroup act as a reference group and utilise the specialist knowledge of partners, including people with a lived experience to support with the review and updating of safeguarding policies, procedures, guidance, and tools.

The NLSAB suite of documents are regularly reviewed by the subgroup to ensure they are reflective of legislation and case law, and to ensure they also adapt in response to learning from case audits, learning reviews and people's experiences.

Over the course of the year the subgroup have refreshed and updated a number of policies – including the Vulnerable Adults Risk Management (VARM) policy.

The VARM guidance has been devised to support the NLSAB partnership to achieve successful outcomes when working with adults who remain at high risk of harm despite previous intervention efforts.

The focus of the VARM is on addressing significant risk to adults and in doing this will also consider other people affected. The VARM is intended to enable better information sharing and risk management between agencies and facilitate better outcomes for people.

It is important that our VARM process works as effectively as possible to support the best outcomes for the vulnerable people we work with.

In March 2024 the subgroup completed audits on all VARM referrals and cases heard at VARM meetings from 1 January 2023 – 31 December 2023. The audits identified good practice, such as:

- There was clear evidence that the voice of the adult was included within the referrals and within VARM discussions
- Practitioners had taken a holistic view to supporting the adult
- Multi-agency working was strong, and decisions were made in partnership
- Following the audits a number of actions were taken to further strengthen the process including:
 - Implementation of an electronic referral form to enhance quality
 - Development and dissemination of a 7-minute briefing to raise awareness and to aid induction for new VARM members

Protection and Accountability Group

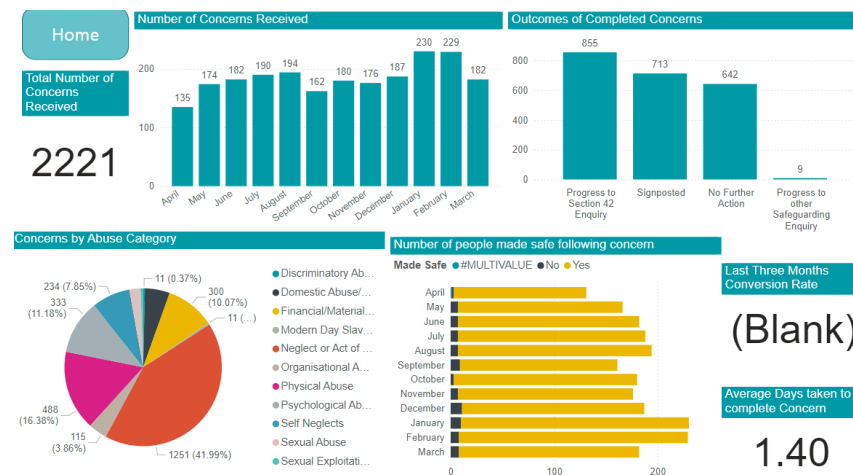
Data and intelligence

The NLSAB and its partners have continued to work together to prevent and reduce the risk of harm to people with care and support needs. The subgroup regularly analyses and monitor the effectiveness of safeguarding activity, at each meeting they review and scrutinise available data and intelligence to identify themes and trends, informing areas for development, innovation and improvement.

The available intelligence includes:

- NLSAB data dashboard
- CQC report information including analysis of the five domain levels
- Information from reviews such as Safeguarding Adult Reviews (SARs), Learning Disability (LeDeR) Reviews, Domestic Homicide Reviews (DHRs)
- Relevant datasets from other agencies / organisations
- Learning from mechanisms within the Scrutiny & Assurance Framework

The group have continued to develop and enhance the interactive Power BI data dashboard, the dashboard allows partners to have oversight on key safeguarding categories and demographics and includes real-time data in relation to timescales and ongoing enquiries. The dashboard includes key areas such as concerns, enquiries, geographical location, timescales and outcomes. In addition to the dashboard, a quarterly story board is also shared which gives context and triangulates the data. The story board provides an overview of our local picture and how it compares, themes and trends that could be improved, 'what good looks like' and what needs to happen next.



In addition to the safeguarding storyboard the subgroup have also developed a bespoke storyboard specifically relating to providers (both care homes and home care), the document highlights themes and trends as well as identifying actions to strengthen future practice. The data is also presented within the Health and Social Care Standards Board to ensure wider sharing and dissemination.

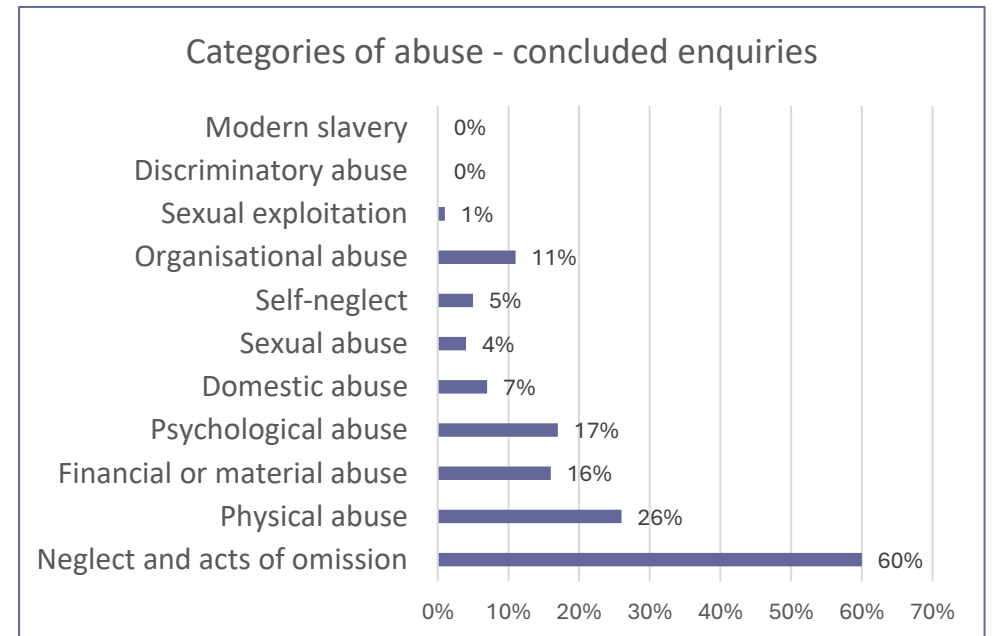
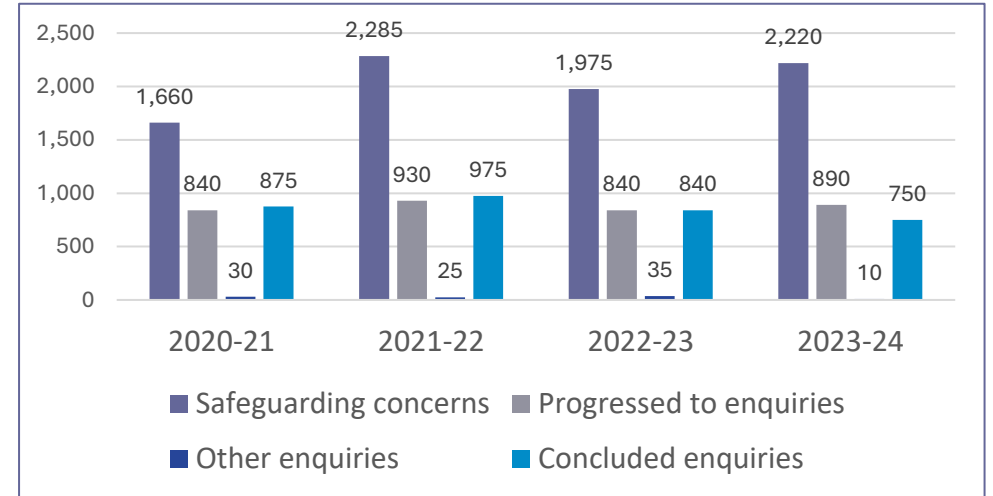
Safeguarding adults data 2023-24

During 2023-24, a total of 2,220 safeguarding concerns were received, which is an increase of 12% in comparison to the previous year. Of those 2,220 safeguarding concerns, 890 became safeguarding enquiries, and a total of 750 safeguarding enquiries were completed during the year.

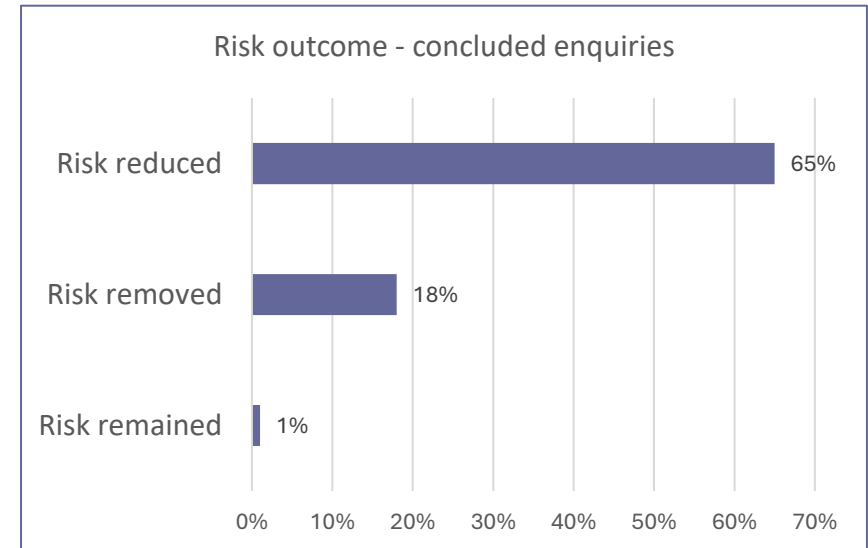
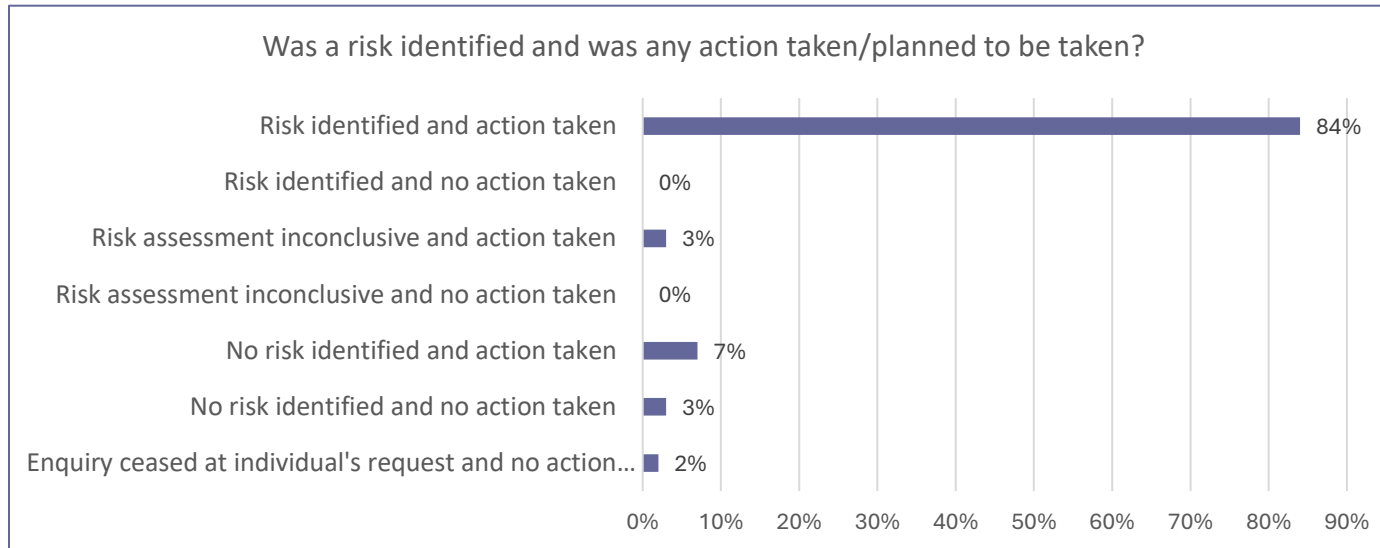
On occasions when a safeguarding enquiry was not required, other forms of support, advice and guidance, or other services will have been provided, dependent on the adults' views, wishes and needs.

As in previous years, care homes continue to be the highest location of risk making up 55% of concluded S42 enquiries this year. Own home is the secondary location of risk making up 23%. This trend differs slightly from the England average where own home had the highest concentration of risk.

The most common type of risk in Section 42 enquiries that concluded in the year was neglect and acts of omission, followed by physical abuse and psychological abuse. This is a slight change from 2022-23 where financial and material abuse was the third highest category. The lowest categories of risk were modern slavery and discriminatory abuse. It is important to note, however that a person may experience more than one type of abuse.

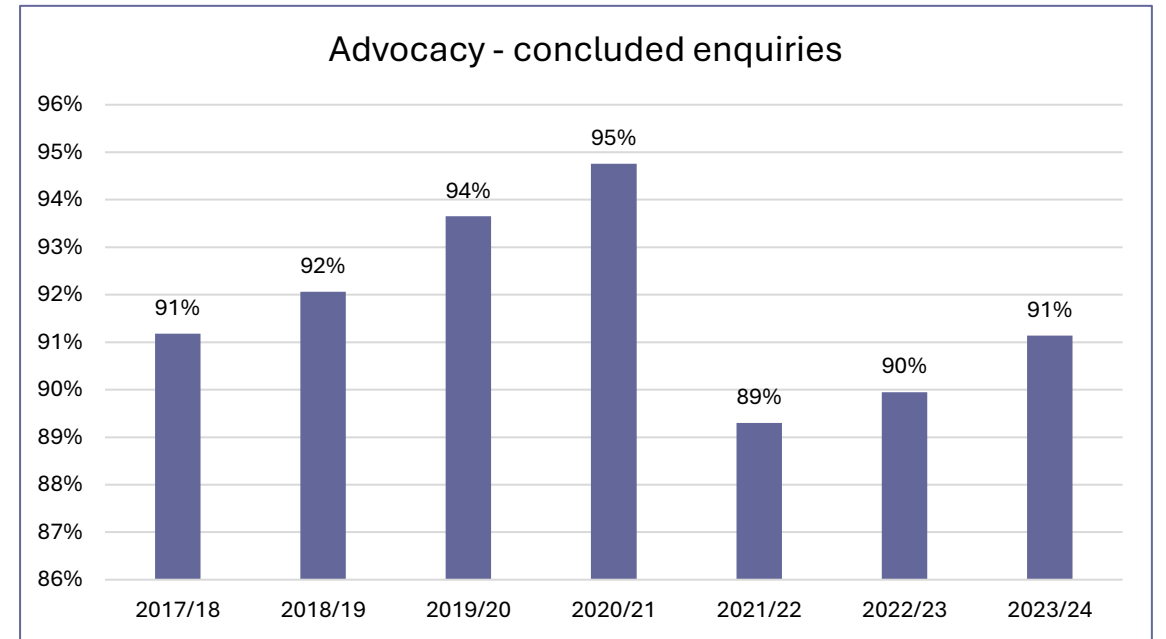
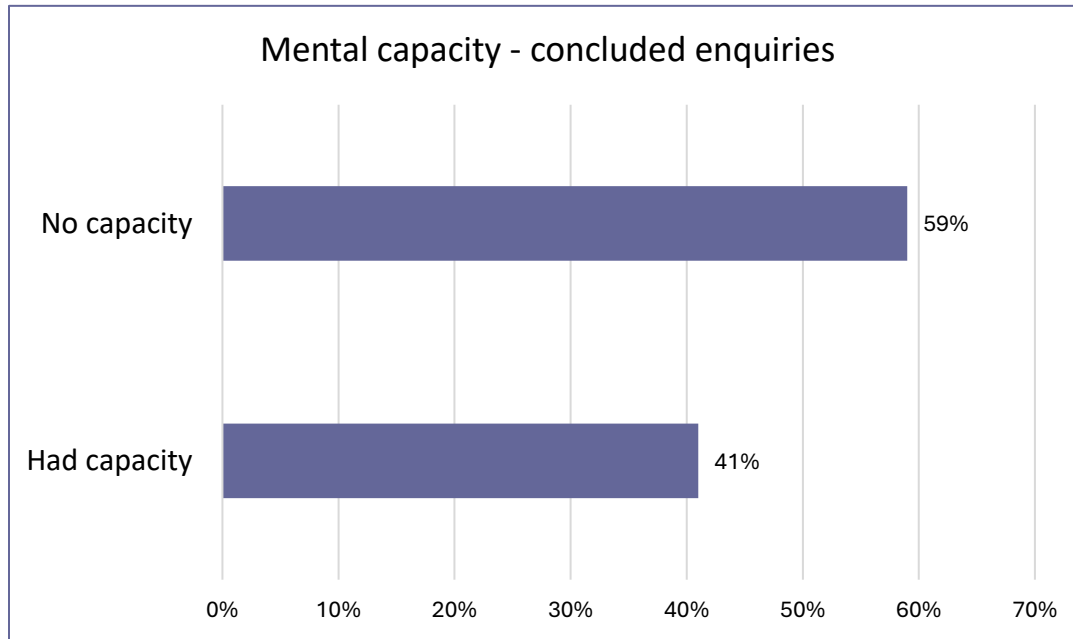


Safeguarding adults data 2023-24



- At 84% risk identified and action taken remains the highest outcome of concluded S42 enquiries, indicating that a correct threshold for S42 enquiries is in place
- In 99% of enquiries identified risks were either removed or reduced
- It is important to recognise, that sometimes people may choose to live with risk, or it may remain with safeguarding plans and strategies in place

Safeguarding adults data 2023-24



59% of people lacked capacity in relation to the safeguarding enquiry.

Where a person lacked capacity, 91% were supported by a family member, friend or advocate.

Safeguarding adults data 2023-24

Making Safeguarding Personal (MSP)

MSP is about having conversations with people about how to respond in safeguarding situations in a way that enhances involvement, choice and control as well as improving quality of life, well-being, and safety. The Care Act 2014 advocates a person-centred, rather than a process driven approach.

Making someone safe doesn't always lead to making someone happy. In effective safeguarding practice it is important to understand there is a balance between rights and risks.

MSP questions in the dataset comply with the standards set by NHS digital, ensuring they are comparable with all other authorities across England.

95%

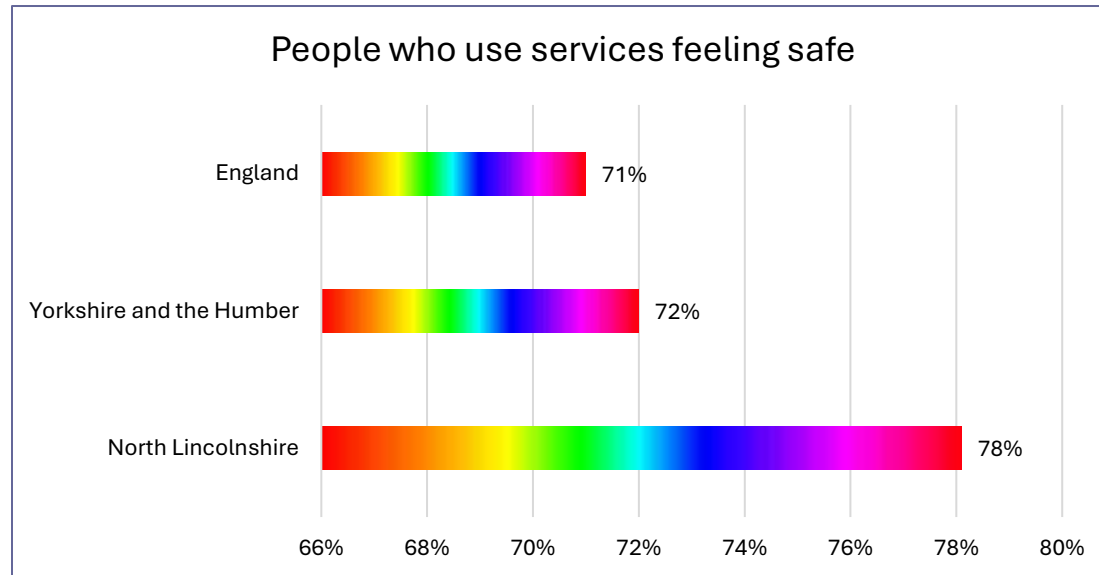
of individuals and /
or their
representatives
were asked their
views and wishes
in relation to the
S42 enquiry

96%

of individuals and
/ or their
representatives
felt their views and
wishes had either
been partially or
fully met



Safeguarding adults data 2023-24



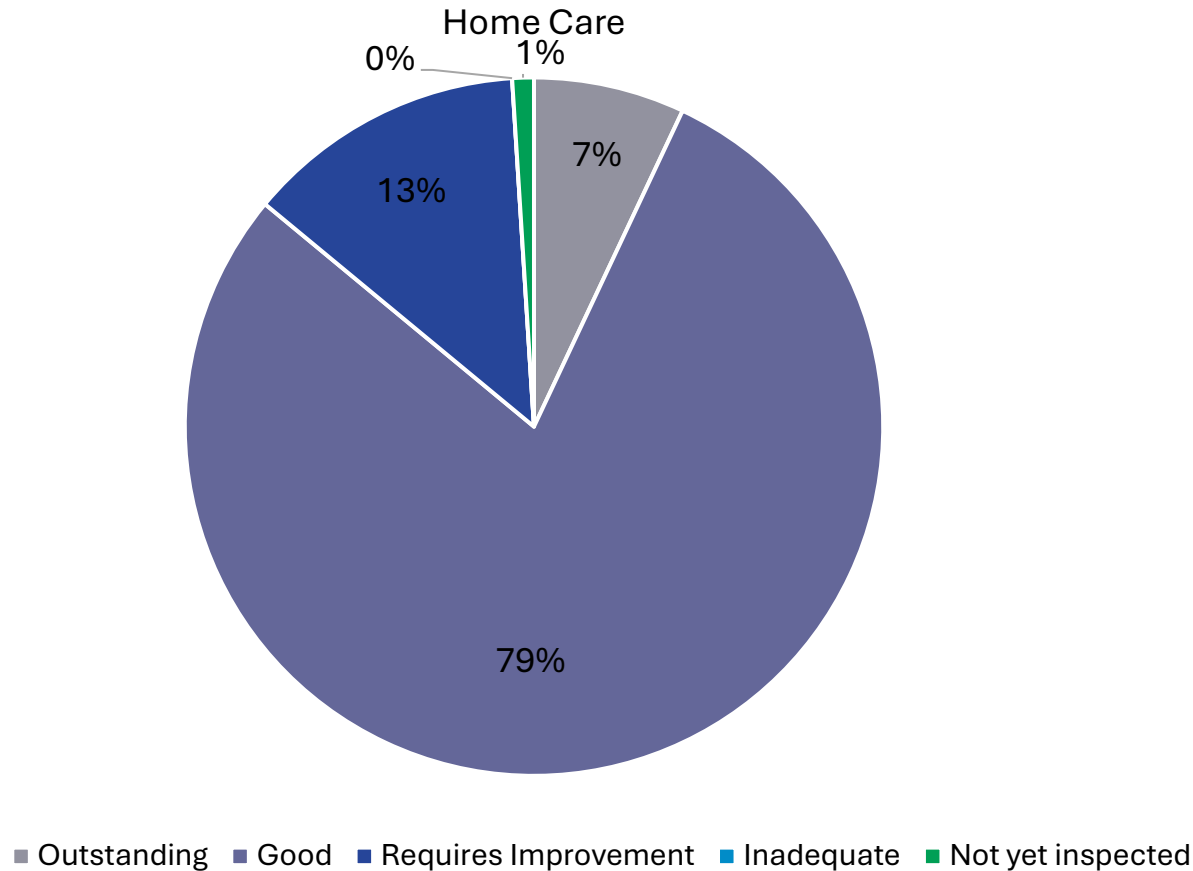
In North Lincolnshire, the score for people using services who they felt safe is 78.1% - this is 3.1% higher than our local data from the previous year.

This data was drawn from section 4A of the Adult Social Care Outcomes Framework (ASCOF) in England for the period 1 April 2023 to 31 March 2024. The data measures how well care and support services achieve the outcomes that matter most to people.



Safeguarding adults data 2023-24

Care Quality Commission ratings for North Lincolnshire Care Homes and



This information relates to the quality assurance of registered care providers following Care Quality Commission (CQC) inspections. The data indicates a high-quality care sector in North Lincolnshire with 86% of providers being inspected as either good or outstanding.

Where a provider has been rated as inadequate or requires improvement, board partners work closely together with the provider to offer support and guidance and to seek assurances that people are safe.

Safeguarding data and intelligence is also utilised to enable partner agencies to work with providers, taking an early intervention and prevention approach to safeguarding. The development of the interactive data dashboard allows themes and trends relating to care providers to be identified quickly.

Safeguarding Adult Reviews

A SAR takes place when agencies who worked with an adult who suffered abuse or neglect, come together to find out and think about how they could have done things differently. The aim of a SAR is to promote effective learning and improvement. SARs should be used to explore examples of good practice, as well as those not so good, and should identify learning which can be applied to future cases.

SARs are overseen by NLSAB Executive SAR Group, consisting of representatives from the board's statutory partners (North Lincolnshire Council, North Lincolnshire Health and Care Partnership and Humberside Police).

During the year, the SAR Executive Group received no new SAR referrals, and one SAR remains ongoing and is being undertaken by an independent author.

The subgroup continues to track recommendations identified in previous SARs to ensure learning is embedded.

Following the publication of Adult A SAR in 2020, in the absence of a forensic service nationally and locally, North Lincolnshire Health and Care Partnership, in collaboration with the NLSAB commenced a pilot, supported by NHS England and the Faculty of Forensic and Legal Medicine, to develop a Forensic Medical Examination service. The pilot went live in May 2022 and in April 2023 an independent evaluation into the pilot commenced by Hull University.

Part of the evaluation consisted of speaking to practitioners in the Safeguarding Adults Team and a range of partner organisations, the evaluation identified that the pilot had significant impacts on strengthening and enhancing safeguarding practice.

'I definitely feel more supported and confident in my practice'

'it brings together everyone's expertise, strengths and skills'

'we can be assured knowing people are safe'

'it helps with the how, why and where with our decision making'

Due to the success of the pilot and positive outcomes achieved for vulnerable adults, the pilot will continue for a further 12 months.



Next steps and areas of focus

As evidenced within this Annual Report, the board have made considerable progress this year in relation to delivering the priorities and strategic objectives outlined within the Strategic Plan.

We recognise the importance of ensuring that our focus remains on the issues which are going to make the greatest difference to safeguarding people in North Lincolnshire.

The following key themes have been identified by board partners as areas of future focus:

- Seeking to strengthen the voice of carers within the safeguarding partnership
- Continuing to understand the real-life experiences of people who have been through the safeguarding journey to better understand the difference it has made, and how we can develop our future practice
- Partners working together to enhance and strengthen mechanisms, ensuring information sharing is not a barrier
- Continuing to analyse all available data and intelligence to help recognise emerging safeguarding themes and trends, including considering hidden harm and harm categories where there are low reports of concerns, and ensure action is taken when needed
- Continuing to build on the success of the interactive data dashboard, enhancing data around people's voice and experiences – including strengthening links with homeless data
- Continuing to promote a positive learning culture where partners continually reflect on practice and learn from local, regional and national reviews and identify ways to prevent and reduce harm
- Continuing to ensure that policies, procedures and guidance are effective, flexible and adapt in response to learning
- Working with other partnership boards to avoid duplication and ensure a collaborative and effective approach is taken to safeguarding adults
- Building on the established relationships and enhancing engagement with local community groups, and the voluntary sector to raise awareness and understanding of safeguarding adults, with a focus on diverse, isolated and under-represented communities

For further information, please visit our website



Safeguarding Adults Board
www.northlincssab.co.uk



Sign up to the Safeguarding Adults Board communication emails by scanning the QR code or by visiting the below link

<https://forms.office.com/e/y4bsQkqFT5>

